

Welcome to



www.franchisebatao.com |

NV SHOPPE
SHOP WITH US AND CHANGE YOUR LIFE



Certificate of Incorporation

Given under my hand at Manesar this Twenty first day of August Two thousand twenty

N V SHOPPE SALES AND MARKETING PRIVATE LIMITED
A-201 RAJHANS PLAZA INDRAPURAM, GHAZIABAD, Ghaziabad
Uttar Pradesh, India, 201014

* as issued by the Income Tax Department

MCA



e - Permanent Account Number (e-PAN) Card
AAHCN10590

Permanent Account Number (PAN) facilitates Income Tax Department linking of various documents, including property records, bank accounts, investment, tax returns, etc. PAN is required for opening of bank accounts, purchase and sale of immovable property, opening of new bank accounts, etc. PAN is required for opening of new bank accounts, purchase and sale of immovable property, opening of new bank accounts, etc. PAN is required for opening of new bank accounts, purchase and sale of immovable property, opening of new bank accounts, etc.



Electronically Issued and Digitally signed ePAN is a valid mode of issue of Permanent Account Number (PAN) post amendments in clause (c) in the Explanation occurring after sub-section (8) of Section 139A of Income Tax Act, 1961 and sub-rule (6) of Rule 114 of the Income Tax Rules, 1962. For more details, [click here](#)

PANNO.

COMPANY'S PROFILE



The Company came into existence in 2005 with a single product namely, **Doctor's Pain Oil**. After the grand success of this product, the company got a Registered Trademark under the name “**Neovedica**” and began manufacturing the whole range of herbal products like hair oil, skin care products and many more. Now we are coming with our new venture **NV SHOPPE SALES AND MARKETING PRIVATE LIMITED** in E-commerce & Retail Store Chains along with E-Learning Education Platform, Event Management & Entertainment Platform, IT & Development Solutions Platform, Real estate etc....



VISION & MISSION



NV Shoppe has the distinction of being the largest ONLINE & OFFLINE retailer in the country. NV Shoppe's commitment to "bettering the lives". We are planning to touch every corner across Pan India with our 2000+ Stores, VENDOR App & FRANCHISE Module in coming years. Our target is to reach more than 10 crore users. Now NV Shoppe has landed in the Modern Trade & Retail. Here you will get the same products at the lowest prices. Through Direct Selling, our members get a handsome profit share. We have our presence in market in both online and offline modes so that we can provide our products and services directly to your homes in every corner of the country. Our goal is to deliver quality and variety to create a better everyday life for our associates and to spread the same in all continents of the world.

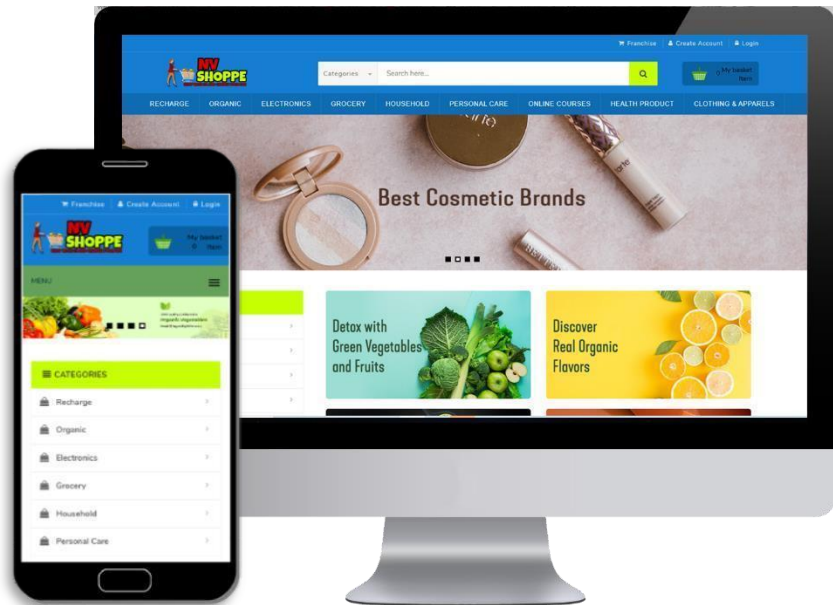
ALL LEADING BRANDS AVAILABLE



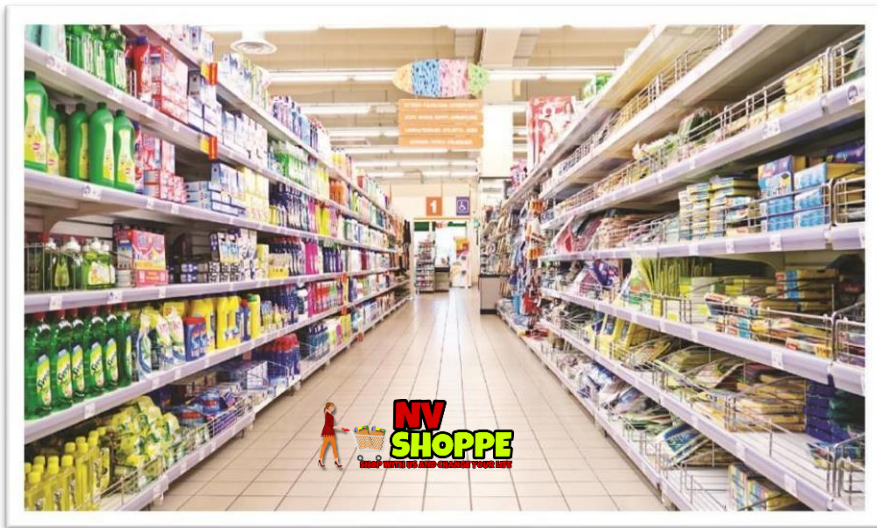
National brands

Regional brands

NV SHOPPE STORES



✓ Online



✓ Offline

RANGE OF PRODUCTS

- Organic
- Electronics
- Grocery
- Household
- Personal Care
- Clothing & Apparels
- Health Products
- And Many More



NV SHOPPE EAST DELHI STORE



NV SHOPPE DELHI STORE





Nv Shoppe Offers Franchise Opportunity in Pan India
Basis

Franchise Model

Two Lucrative Franchise Models

1. Mini Mart : In investment in Compact
2. Super Market : Full Fledge Business Model



USP of NV Shoppe Franchise

- ✓ 50000 Franchise Fee(one Time)
- ✓ Complete Setup will be done by Company
- ✓ Racking system and Interior Includes
- ✓ Branding
- ✓ 1 month promotion & marketing support
- ✓ Full system & software
- ✓ Customer base Support



How to Get More Customers

With the Unique Business Model of NV Shoppe You will Get
Customer Support in 3 Ways

- ✓ Walk in Customers
- ✓ Company Prime Customers
- ✓ Online Customers



Franchise Model



1. Mini Mart Model

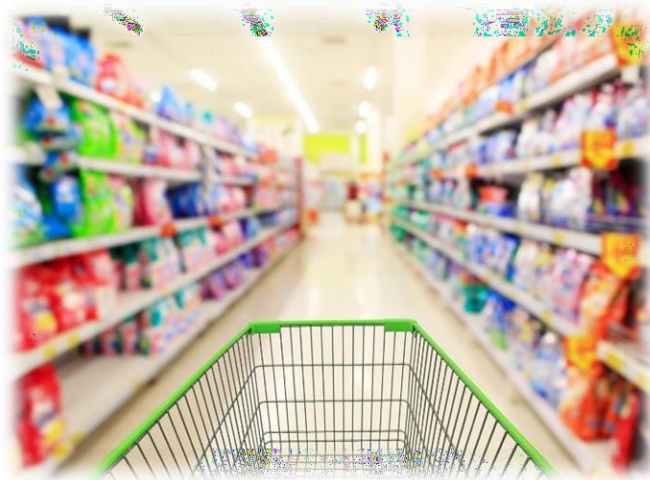
- Total investment Reqd - 7.5 lakh
- Area - Min 300 sqft
- Stock Investment - 4.5 lakh
- Interior Investment - 3lakh
- ROI - 1 - 1.5 Years
- Running Cost - Rent ,
2 Manpower , electricity



Note : Investment of Interior will Increase Rs. 50,000 on every 100 sq. ft.

2. Super Market Franchise Model

- Total investment Req'd - 16.5 lakh
- Area - Min 900 sqft
- Stock Investment - 11.5 lakh
- Interior Investment - 5 lakh
- ROI - 1.5 – 2 Years
- Running Cost - Rent ,
3 Manpower , electricity



Note : Investment of Interior will Increase Rs. 50,000 on every 100 sq. ft.

SETUP DETAILS

- SOFTWARE
- SYSTEM(DESKTOP WITH UPS)
- BILLING PRINTER
- WEIGHTING MACHINE
- SCANNER
- 5 BASKET (in mini mart)
- 5 CART with BASKET (in super mart only)
- Racks, Pilate (as per area)

NOTE- **The setup charges will be non refundable**

- **Branding**

- * Front Board – 3*10

- Flax board with iron frame

- * 20 board – 2*4

- Flax board with iron frame

- * Standee

- * Boucher – 1000 pcs

- * Banner – 3*10

- Product list can disclose after survey

- Whitewash, lights, counter will be not included in setup.

How to Start?





Thankyou!

Call on- 7827719099

www.franchisebatao.com